

barkman™

# Keystone Compac® III Hewnstone



## Proven Performance

Featuring unrivalled aesthetic options, cost saving versatility and proven wall performance, Keystone Compac® III Hewnstone is favoured by architects, engineers and contractors worldwide. Using the proven Keystone Compac® III pin connection system, it is the perfect solution for gravity walls up 4 feet in height and large-scale projects in excess of 60'h.



Garden Walls



Grand Walls

## SIZES (L X W X H)



Smooth Standard  
203 x 457 x 305 mm  
8 x 18 x 12 in

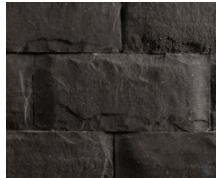


Smooth Corner  
203 x 457.2 x 228.6 mm  
8 x 18 x 9 in

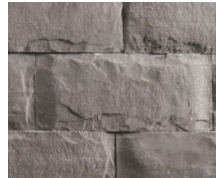


Smooth Closed Coping  
100 x 450 x 300 mm  
3.94 x 17.72 x 11.81 in

## COLOURS



Charcoal

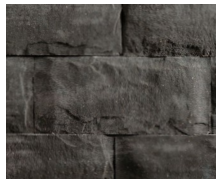


Natural



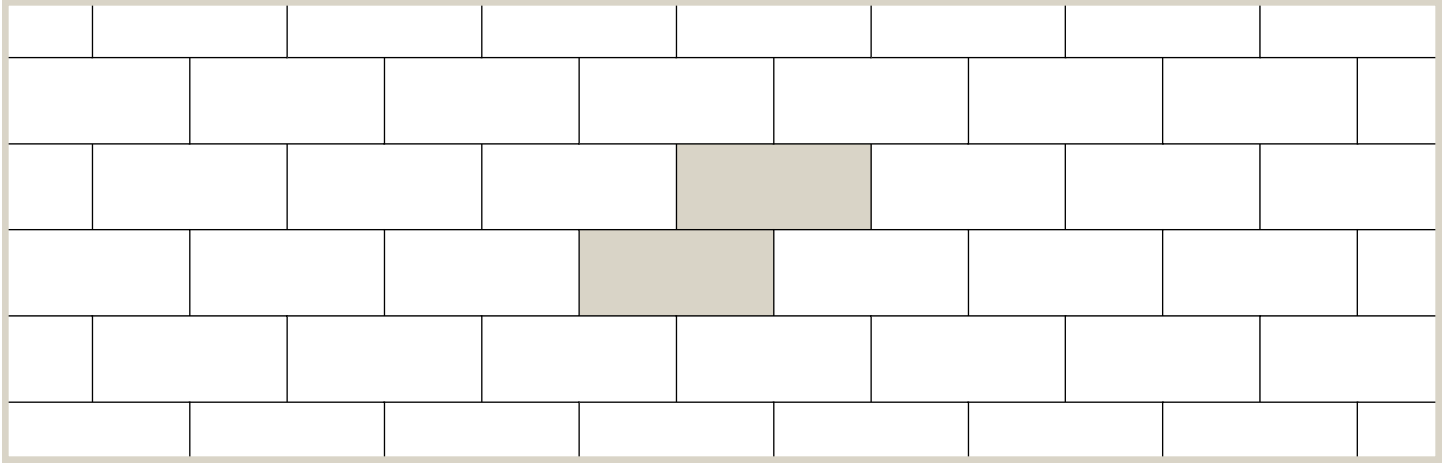
Sierra Grey

## BC & ALBERTA EXCLUSIVE



Graphite

## INSTALLATION NOTES



Pattern 1

## INSTALLATION NOTES

Use 2 fiberglass pins per block to connect them together except on the top row where the caps are placed. Keystone Compac® III Hewnstone is sold in full bundles only. For near vertical batter, place pins in front hole location. For 8.5 degree batter, place pins in back hole location. For 4 degree batter, alternate pin location

starting with back pin location on first course, front location on second course and alternating on consecutive layers. Alignment pins sold separately. For more in depth installation guides for specific products, visit **BarkmanConcrete.com**.

## BUNDLE CONFIGURATIONS

DESCRIPTION	UNIT					PALLET					
	SIZE (H X W X D)		FACE AREA		WEIGHT	NO. OF HORIZONTAL LAYERS	NO. OF UNITS	NO. OF ROWS	FACE AREA		WEIGHT
	MM	IN	M <sup>2</sup>	SQ FT	LB				M <sup>2</sup>	SQ FT	LB
Keystone Compac III Standard	203 x 457 x 305	8 x 18 x 12	0.09	1	77.88	5	30	-	2.78	29.96	2336
Keystone Compac III Hewnstone Corner	203 x 457.2 x 228.6	8 x 18 x 9	-	-	104	3	18	-	1.67	17.97	1872
Coping	100 x 450 x 300	3.94 x 17.72 x 11.81	-	-	66	6	48	2	21.95 linear metres	72 linear feet	3168
Fiberglass Alignment Pins	13 x 133	0.5 x 5.25	-	-	0.08		100/box	-	-	-	7.9/box

### Steinbach Office

152 Brandt Street  
Steinbach, MB R5G 0R2  
T (800)-461-2278  
F (204)-326-5915

### Winnipeg Office

901 Gateway Road  
Winnipeg, MB R2K 3L1  
T (800)-342-2879  
F (204)-663-4854

### Calgary Office

813 McCool St. Box 1136  
Crossfield, AB T0M 0S0  
T (403)-946-4630  
F (403)-946-4631

### Vancouver Office

Port Moody, BC  
T 1 800 461 2278  
F (604)-949-0321

### Merritt Office

1132 Midday Valley Rd  
Merritt, BC V1K 1M9  
T (778)-661-1408

